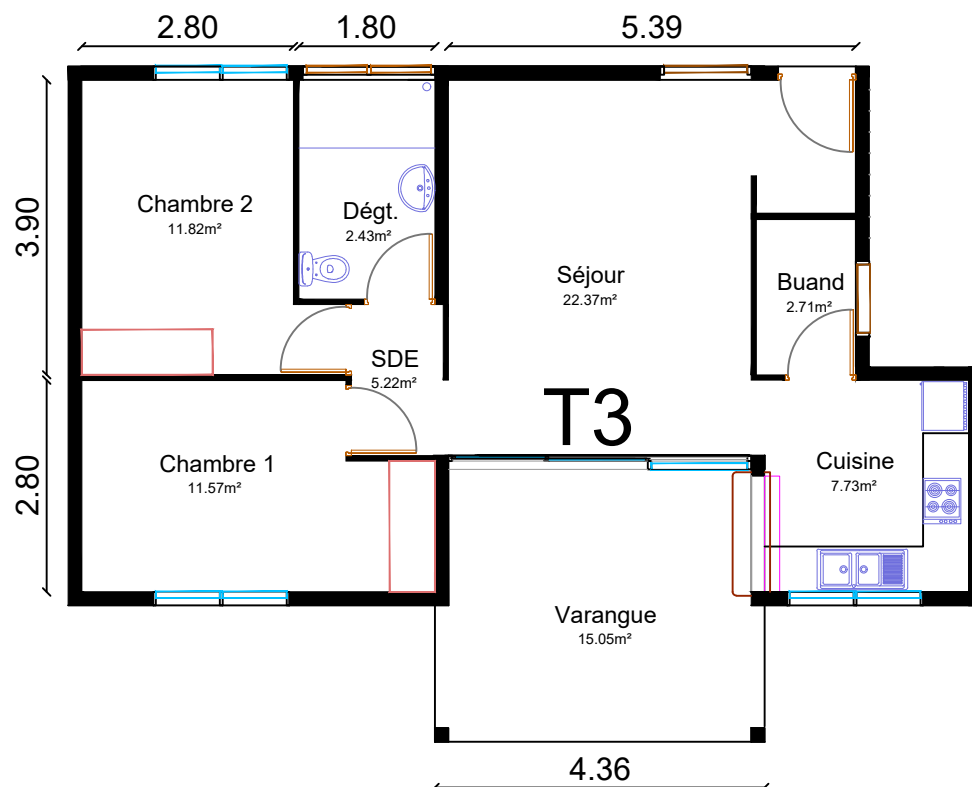
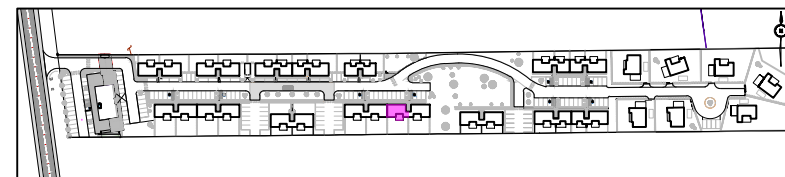




Résidence Évolia - Rémire-Montjoly -



LOT N°59

APPARTEMENT T3 R+1

	M ²
SEJOUR	22.37
CUISINE	7.73
BUANDERIE	2.71
DEGAGEMENT	2.43
CHAMBRE 1	11.57
CHAMBRE 2	11.82
SALLE D'EAU	5.22

TOTAL SH 63.85

VARANGUE V 15.05

TOTAL SH+V 78.90