

RESIDENCE YANA

Acajou 97232 Le LAMENTIN

R+2 - T3 Appt 11

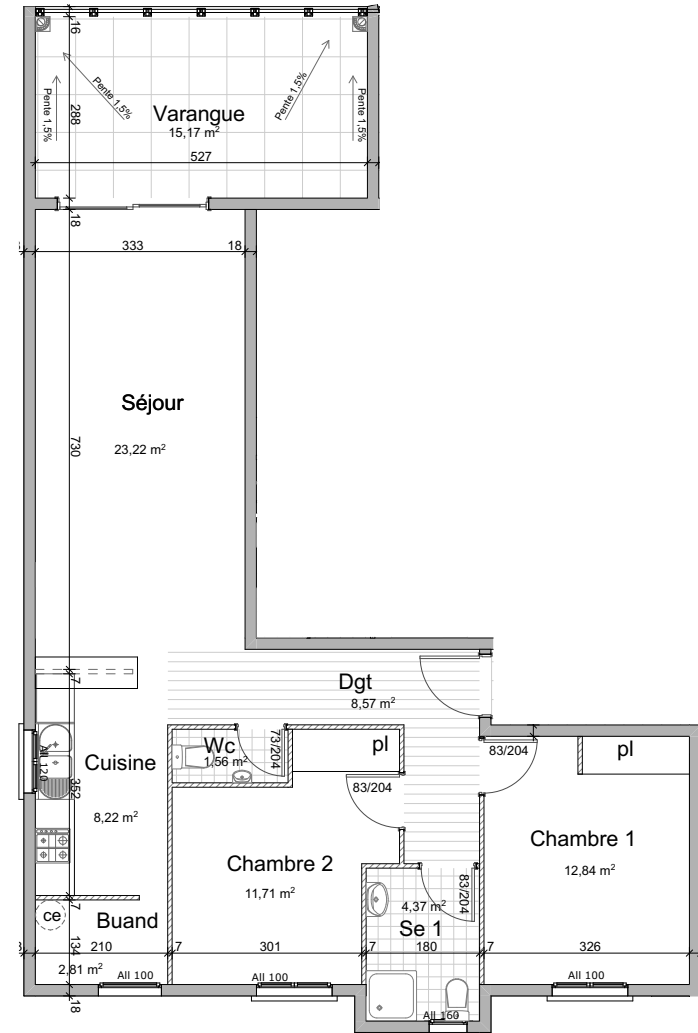


Tableau des surfaces

Séjour	23,22	m2
Cuisine	8,22	m2
Buand	2,81	m2
Chambre 1	12,84	m2
Salle d'eau 1	4,37	m2
Chambre 2	11,71	m2
Dgt	8,57	m2
Wc	1,56	m2
Surface habitable	73,30	m2
Varangue	15,17	m2
Surface totale	88,47	m2